

### TECHNICAL SPECIFICATIONS

- Max side load 60 kN
- Lateral adjustment 5 mm
- Bolt M24 Grade 8.8
- Tightening Torque 200 Nm
- Steel Quality St52-3

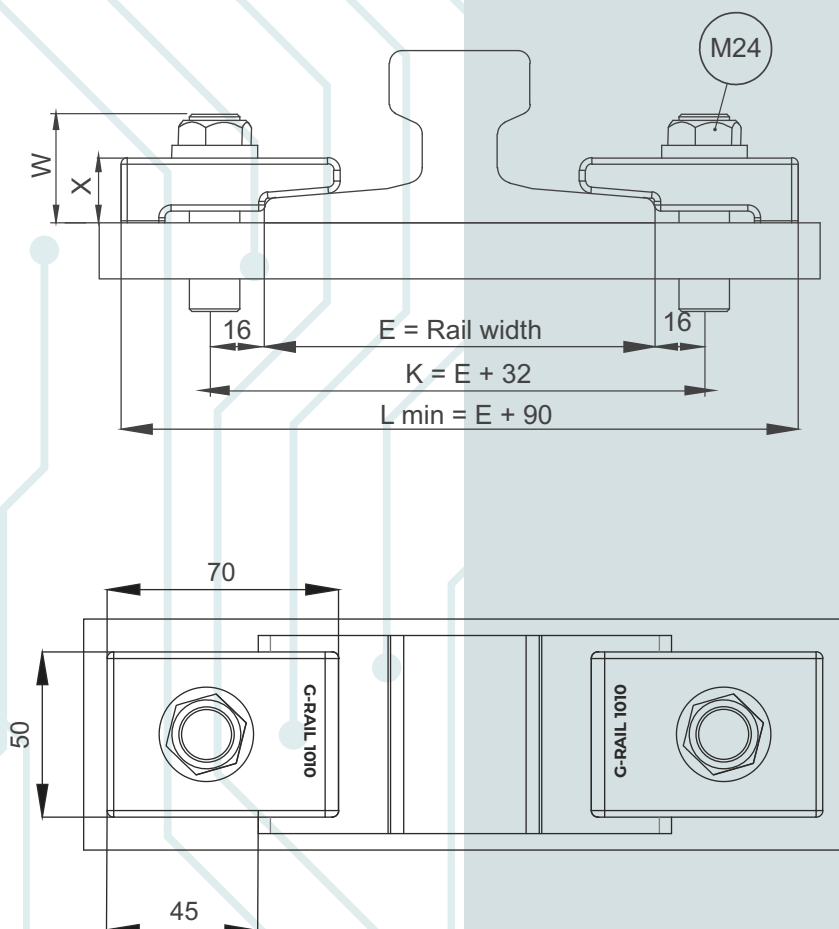
CLIPS NO	X	W	Weight (Kg)
G-RAIL 1010	22	48	0,365

### MAIN FEATURES

1. G-RAIL 1010 bolted rail clip, which is produced from a forged part, enables ease of assembly thanks to its special desing.
2. The clips can preferred for rails with or without pads.
3. The main part is locked to rail with special bolt.

#### 1 RAIL WITH PAD

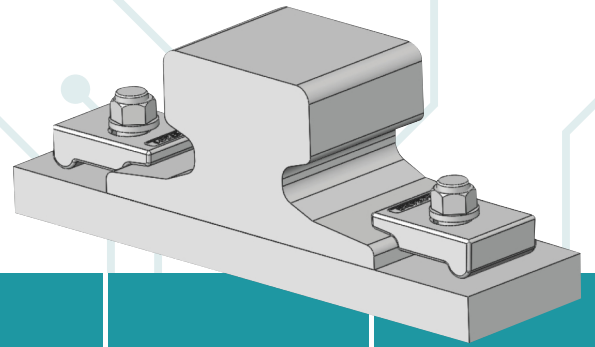
#### 2 RAIL WITHOUT PAD

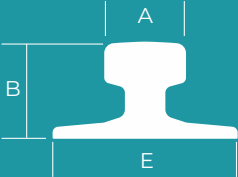


Flange nut can also be used on request.  
Please consult us for using flange nut.

# 1010

## G-RAIL 1010 Bolted Rail Clips



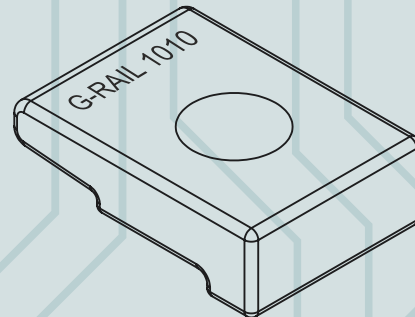
	A	B	E	Weight kg/m	Without Pad	With Pad
A45	45	55	125	22,1	1010	1010 P
A55	55	65	150	31,80	1010	1010 P
A65	65	75	175	43,10	1010	1010 P
A75	75	85	200	56,20	1010	1010 P
A100	100	95	20	74,30	1010	1010 P
CR 105	65,1	131,80	131,80	52,09	1010	1010 P
27 E1	50	120	95	27,06	1010	1010 P
30 E1	60,3	108	108	30,13	1010	1010 P
33 E1	58	134	105	33,47	1010	1010 P
36 E1	60	130	100	36,26	1010	1010 P
40 E1	67	138	125	40,95	1010	1010 P
46 E4	65	145	135	46,9	1010	1010 P
49 E1	67	149	125	49,39	1010	1010 P
50 ES	67	148	135	49,9	1010	1010 P
54 E1	70	159	140	54,77	1010	1010 P
60 E1	72	172	60,21	60,21	1010	1010 P

CLIP CAN BE USED WITH MORE TYPE OF RAILS THAN THOSE LISTED.

### INSTALLATION INSTRUCTIONS:

The main component is first positioned on the bolt against the rail and the special washer is then positioned on the main component. The nut is hand tightened. Hammer is used for tighter contact. The main component is in position, use an electrical or pneumatic wrench to torque the nut. Please contact G-RAIL for full installation instructions

### WELD DETAIL



## G-RAIL NO DOUBT ABOUT CRANE RAILS AND FASTENING SYSTEM



Przedstawiciel handlowy w Polsce:

DETRANS  
ul. Damrota 2  
41-800 Zabrze,  
NIP: 6482772915

Jacek Kohn  
Telefon: +48 511 973 972  
E-mail: j.kohn@detrans.pl

